

Leaders of Character, championing Service and Excellence



P6 Meet-The-Parents 2022

Programme Flow

3.00 to 3.45pm	Briefing by School Leaders & Year Head	PSLE matters, Level Programmes
3.45 to 4.15pm	Briefing by respective Form Teachers	Routines & Expectations, Homework Policy

Slides on curriculum updates will be posted online for 1 month (English, Maths, Science & MT) – Links via PG

Should you have any queries, please email the respective academic Head of Department or Subject Teacher



Our Belief at PVPS

Our School Philosophy

Every Child Matters

Our Mission

**To nurture future-ready students,
anchored on values**

Our Vision

**Leaders of Character,
championing Service and
Excellence**

Our Values

R³ICH

Our Motto

**Ambitio Via Virtus
(Ambition Through All The Excellent Qualities of Man)**

grit
/grɪt/

: mental toughness and courage
: firmness of mind or spirit; unyielding courage in
the face of hardship or danger



The Story of Jonathan Tiong



Do YOU have GRIT?



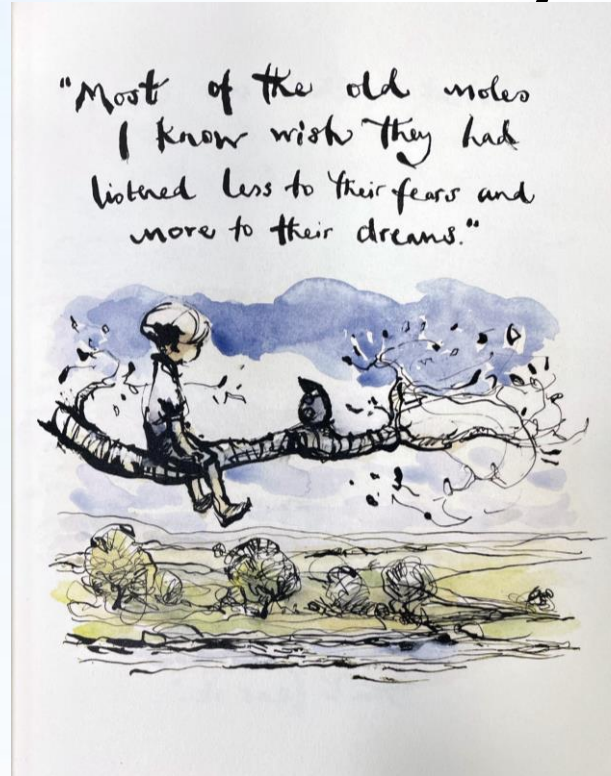
*Leaders of Character,
championing Service and Excellence*

Park View Values

Responsibility in Actions + Resilience in Adversity

What Can I do?

- Have a GROWTH Mindset
- Reframe your problems
- Don't be afraid of failure
- Set goals and follow through



"What is the bravest thing
you've ever said?" asked
the boy.



"Help," said the horse.

**Never allow yourself to
get discouraged and be
strong.**

**Having GRIT and
Resilience also means
knowing when to ask
for help.**



"What do you think is
the biggest waste of time?"



"Comparing yourself to others,"
said the mole.

**Be Yourself
Know Yourself
Not about Giving Up or
Quitting**

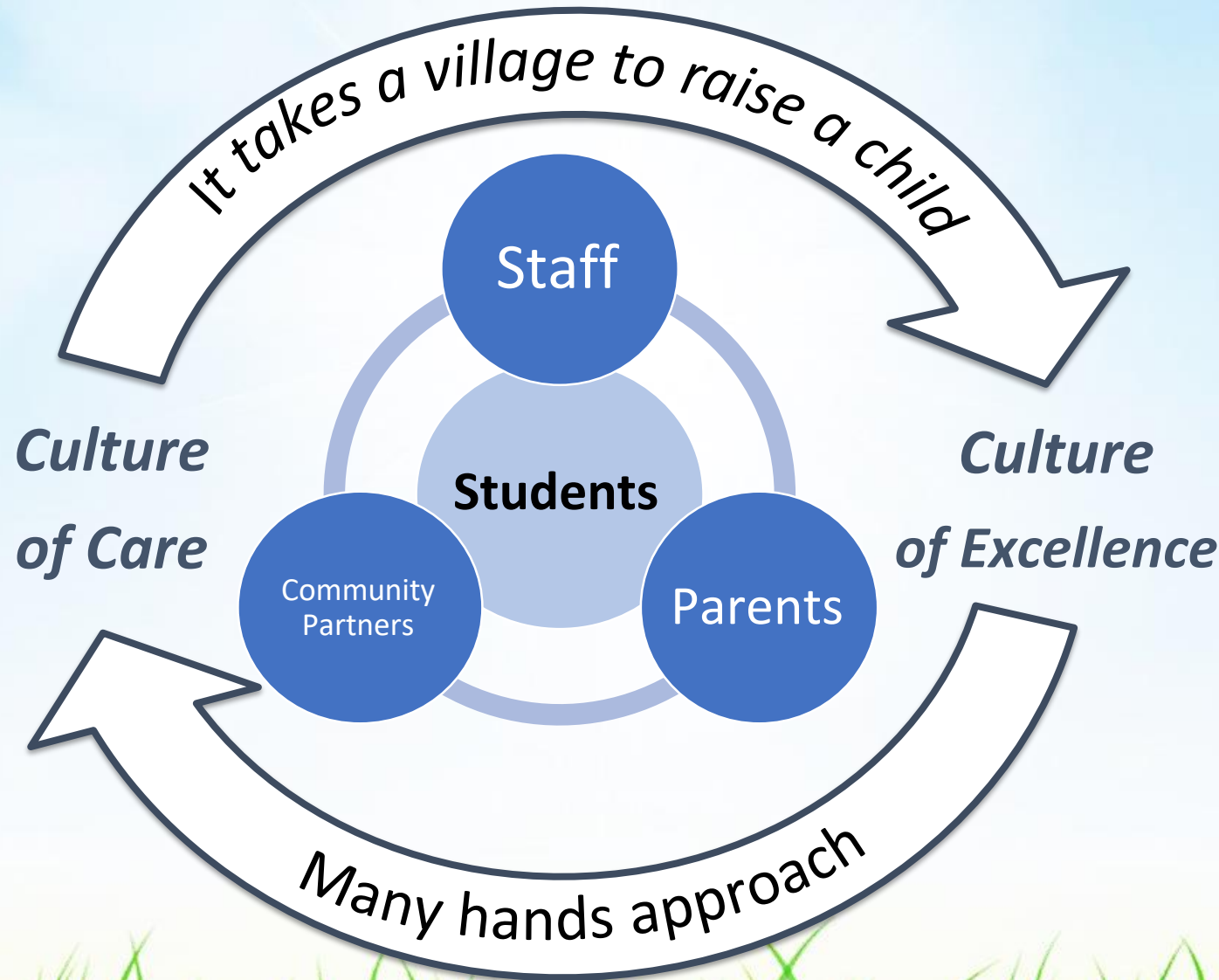


Our School Culture

Value every student

Embrace all learners

Every Child Matters



Every student wants to succeed

All can learn

Growth Mindset



Support for Your Child in School

- UP Motivational Series
- Peer Support Programme
- Lifeskills – Stress Management
- Supplementary classes
- After school support for selected students



Parents as Partners **in nurturing our children, together**

Care and Commitment. Communication and Collaboration
Direct. Truthful. Caring

- Support and work with the teachers
- Support and persevere with your child

our focus and common interest:
the best for our children



Working Together to Support your Child

*“Alone we can do so little,
together we can do so much.”*

- Helen Keller, American Author



Leaders of Character, championing Service and Excellence



PSLE Matters

THE PSLE CHANGES ARE PART OF A BIGGER STORY

Over the years, we have been fine-tuning the education system to help our students discover and develop their strengths and interests, while moving away from an over-emphasis on academic results.



Our PSLE scoring changes aim to:

- Reduce fine differentiation at a young age
- Recognise students' level of achievement, regardless of how their peers have done

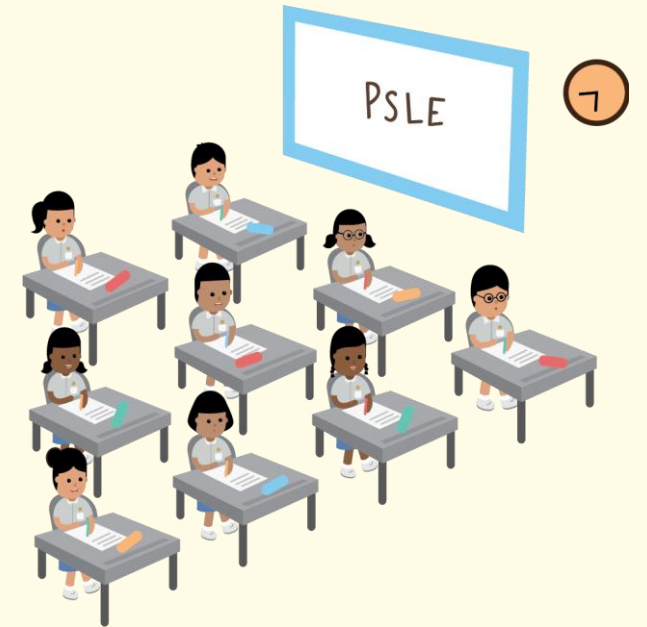


The changes will not affect the curriculum and subjects tested at PSLE

- However, MOE does review the curriculum regularly to ensure that it is relevant and up-to-date. This will continue as per current practice.

THE PSLE REMAINS A USEFUL CHECKPOINT

- To understand where our children are at in their learning after six years of primary school
- Gauge their learning needs so that they can progress to a secondary school and take subjects at a suitable level



HOW PSLE SCORING WORKS



FROM T-SCORE TO WIDER SCORING BANDS

Reflects a student's individual level of achievement

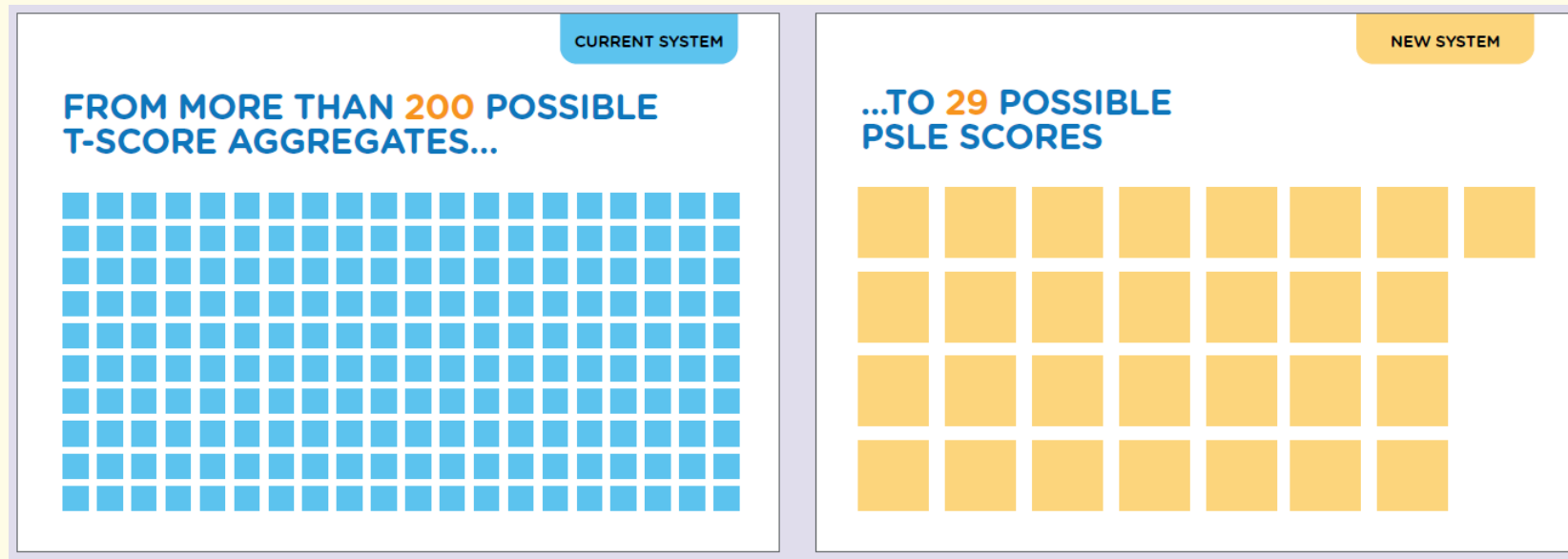
Unlike the T-score, students' AL for each subject will reflect their level of achievement, rather than how they have performed relative to their peers.

AL	RAW MARK RANGE
1	≥ 90
2	85 – 89
3	80 – 84
4	75 – 79
5	65 – 74
6	45 – 64
7	20 – 44
8	< 20

FROM T-SCORE TO WIDER SCORING BANDS

Reduces fine differentiation of students

Students with similar scores in each subject will be grouped into wider bands measured in Achievement Levels (ALs).



Students' scores are differentiated finely. Students can have a T-score aggregate of less than 80 to more than 280, which gives **more than 200 possible different T-score aggregates**.

Students will be placed in fewer groups of PSLE Scores. Students' PSLE scores (the sum of the AL for each subject) will range from **4 to 32**, which gives **29 possible different scores**.

FROM T-SCORE TO WIDER SCORING BANDS

- The PSLE Score replaces the T-score aggregate.
- It is obtained by adding the ALs of four subjects.
- The PSLE Score ranges from 4 to 32, with 4 being the best possible score.
- Students will be placed in secondary school courses based on their overall PSLE score – Express, Normal (Academic) or Normal (Technical).



ENGLISH	AL3
MOTHER TONGUE	AL2
MATHEMATICS	AL1
SCIENCE	AL2

PSLE SCORE: 8

PLACEMENT OUTCOME	PSLE SCORE
EXPRESS	4 – 20
EXPRESS / N(A) OPTION	21 – 22
N(A)	23 – 24
N(A) / N(T) option	25
N(T)	26-30, with AL7 or better in both EL and MA

WHY ARE THE AL BANDS NOT EVEN?

AL	RAW MARK RANGE
1	≥ 90
2	85 – 89
3	80 – 84
4	75 – 79
5	65 – 74
6	45 – 64
7	20 – 44
8	< 20

AL bands and mark ranges are set based on the **learning objectives of the curriculum, and mirror the way we learn:**

- When we learn something new, after some initial practice, we often find ourselves improving significantly.
- But as we get better, the improvements become small steps, and finally, as we reach a high level, we inch just a little further, even after much learning and practice.

The ALs were designed to reflect this reality of learning. They help educators, students, and parents know **how ready students are to access the curriculum at the next level.**



IN SUMMARY...

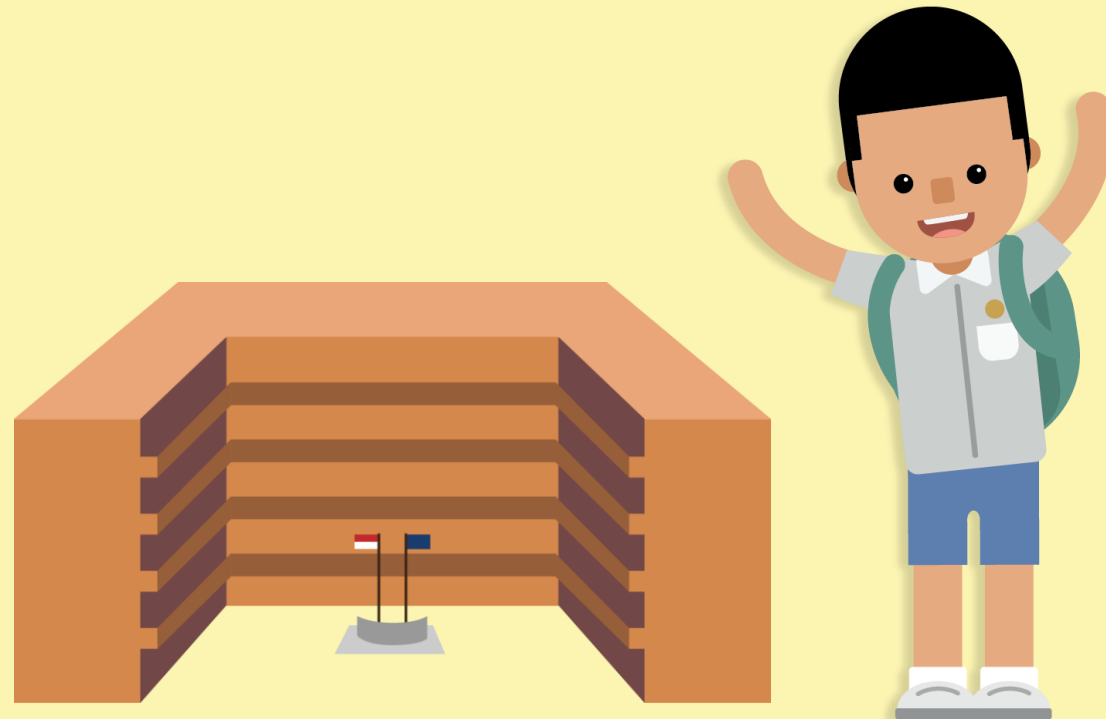
WHAT REMAINS

- Same 4 subjects are tested, and scores are awarded to guide students' choices for the next stage of their education journey
- Curriculum is continually updated. This is not related to the PSLE scoring and S1 posting changes.

WHAT CHANGES

- The T-score Aggregate will be replaced by the PSLE Score, to reduce the fine differentiation of our students at a young age based on exam scores.
- Students will be assessed based on their own achievement, instead of comparing them to their peers.

HOW S1 POSTING WORKS



CHOICE ORDER OF SCHOOLS WILL MATTER MORE

- Students will continue to be posted to a secondary school based on academic merit i.e. overall PSLE score.
- If two or more students with the same PSLE Score vie for the last remaining place in a school, tie-breakers will be used in the following order:

1. CITIZENSHIP

2. CHOICE ORDER OF SCHOOLS

3. COMPUTERISED BALLOTING



EXAMPLE:

4 students - Jane, Bryan, Mary and John, are vying for the last places in School A and School B.

Jane
Singapore Citizen



JANE'S SCHOOL CHOICES	
1.	School A
2.	...
3.	...
4.	...
5.	...
6.	...

Bryan
Singapore Citizen



BRYAN'S SCHOOL CHOICES	
1.	School B
2.	School A
3.	...
4.	...
5.	...
6.	...

Mary
Singapore Citizen



MARY'S SCHOOL CHOICES	
1.	School A
2.	School B
3.	School C
4.	...
5.	...
6.	...

John
Singapore PR



JOHN'S SCHOOL CHOICES	
1.	School A
2.	School B
3.	School D
4.	...
5.	...
6.	...

Students with better scores will be posted first

Jane will be posted first as she has a better PSLE score, and will be posted to School A.

As Jane has taken that last place in School A, Bryan, Mary and John, having the same PSLE score, will vie for the last available place in School B.

Tie-breaker 1:
Citizenship

Bryan and Mary are Singapore Citizens and will have a priority to enter School B.

John will be tie-broken out as he is a Permanent Resident. With no places in School B, John will be considered for School D.

Tie-breaker 2:
Choice order of schools

As Bryan ranked School B higher than Mary in his choice order of secondary schools, he will be posted to School B.

Since the last place of School B is taken by Bryan, Mary will be considered for School C.

Tie-breaker 3:
Computerised balloting

SUBJECT-BASED BANDING (PRIMARY)

OFFERING DIFFERENT SUBJECT COMBINATIONS



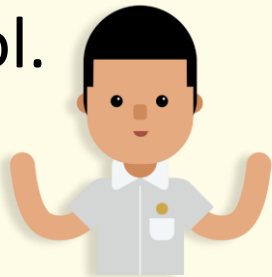
SUBJECT-BASED BANDING (PRIMARY)

- Offers students the option of Standard and Foundation Subjects, depending on their strengths.
- Allow students to focus on and stretch their potential in the subjects they are strong in while building up the fundamentals in the subject they need more support in.



SUBJECT-BASED BANDING (PRIMARY)

- Schools will continue to recommend based on the following:
 - Student's aptitude, motivation and performance in each subject;
 - Student's ability to cope with a particular subject combination; and
 - Whether the subject combination focuses sufficiently on literacy and numeracy, and facilitates the student's articulation to secondary school and beyond.
- Offering subjects at Foundation level is **not a disadvantage to the students.** It enables them to focus on building up strong fundamentals in these subjects and better prepares them for progression to secondary school.



SCORING FOR FOUNDATION LEVEL SUBJECTS



FOUNDATION LEVEL SUBJECT GRADES TO BE LESS FINELY DIFFERENTIATED

- Under the new AL system, to reduce fine differentiation among students, Foundation subject grades will be graded in 3 scoring bands from AL A to C.
- Like Standard subject ALs, the Foundation subject ALs will reflect a student's level of achievement, rather than how they have performed relative to their peers.

Foundation Level AL Reflected on Result Slip	Foundation Raw Mark Range
A	75 – 100
B	30 – 74
C	< 30

FOUNDATION LEVEL SUBJECT GRADES

- For the purpose of S1 posting, Foundation level AL A to AL C will be mapped to AL 6 to AL 8 of Standard level subjects respectively, to derive a student's overall PSLE Score.
- Similar to the current PSLE scoring system, this mapping is based on the learning and assessment load of the subjects, and informs students of their readiness to access the curriculum at the secondary level.

Foundation Level AL Reflected on Result Slip	Foundation Raw Mark Range	Equivalent Standard Subject AL	Standard Raw Mark Range
A	75 – 100	6	45-64
B	30 – 74	7	20-44
C	< 30	8	<20

SCORING OF FOUNDATION SUBJECTS FOR S1 POSTING

- A student's PSLE Score is the sum of the four AL scores across his/her Standard and Foundation subjects.
- Students taking Foundation subjects are eligible for the Express Course, as long as they meet the course placement criteria.
- With Full Subject-based Banding in secondary schools, students may also take subjects at a higher level for those that they are strong in.



ENGLISH AL3

FOUNDATION
MOTHER TONGUE ALB

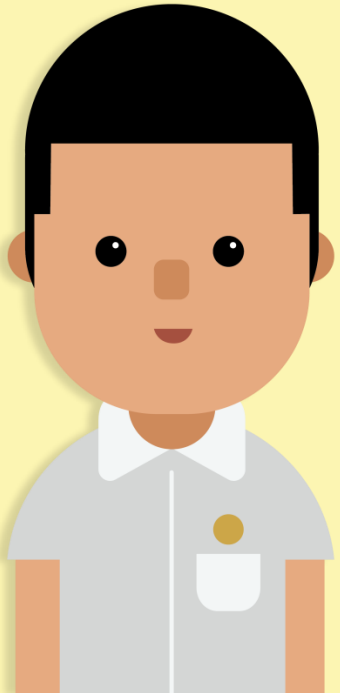
FOUNDATION
MATHEMATICS ALB

SCIENCE AL5

PSLE SCORE: 22

PLACEMENT OUTCOME	PSLE SCORE
EXPRESS	4 – 20
EXPRESS / N(A) option	21 – 22
N(A)	23 – 24
N(A) / N(T) option	25
N(T)	26 – 30, with AL7 or better in both EL <u>and</u> MA

ELIGIBILITY FOR SECONDARY SCHOOL HIGHER MOTHER TONGUE LANGUAGE (HMTL)



ELIGIBILITY FOR HMTL IN SECONDARY SCHOOLS

- The eligibility criteria for taking HMTL is intended to ensure that students can cope with the higher academic load, and takes reference from the current criteria.

ELIGIBILITY CRITERIA FOR SECONDARY SCHOOL HMTL

(i) PSLE Score of 8 or better

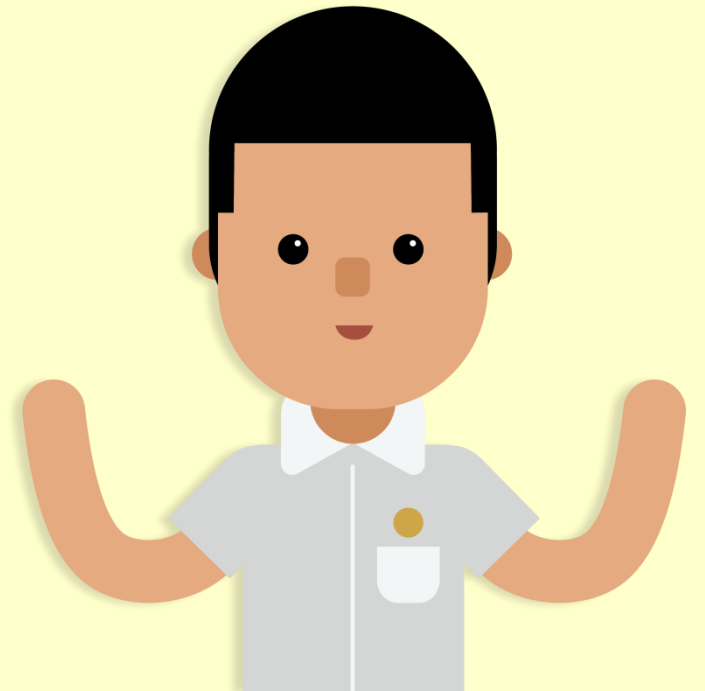
OR

(ii) PSLE Score of 9 to 14 inclusive; and attain

- AL1 / AL2 in MTL or
- Distinction / Merit in HMTL

- For students who do not meet the above criteria, secondary schools will continue to have the flexibility to offer HMTL to students, if they are assessed to have high ability and interest in MTL and are able to take HMTL without affecting their performance in other subjects.

USE OF HCL FOR ADMISSION INTO SAP SCHOOLS



USE OF HCL FOR ADMISSION INTO SAP SCHOOLS

From 2021 Onwards







- Students with better PSLE scores will be posted first, even if they did not take HCL (the 1st child with 7).
- Amongst students with the same PSLE score, those with better HCL grades will be posted first. (the 2nd to 5th child with 8).
- This posting advantage applies before the tie-breakers for S1 posting.

EXAMPLE:

Using HCL for Admission into SAP Schools

Students who take HCL will receive a posting advantage when applying to SAP schools

Students will be considered for admission to SAP schools in the following order:

1st		7	NO HCL
2nd		8	DISTINCTION
3rd		8	MERIT
4th		8	PASS
5th		8	NO HCL
6th		9	DISTINCTION

Students with better PSLE Scores will be posted first, even if they did not take HCL

Amongst students with the same PSLE Score, those with better HCL grades will be posted first



INDICATIVE ACHIEVEMENT LEVEL (AL) CUT-OFF POINT (COP) RANGES FOR DIFFERENT SCHOOL TYPES



INDICATIVE ACHIEVEMENT LEVEL (AL) CUT-OFF POINT (COP) RANGES FOR DIFFERENT SCHOOL TYPES

- The PSLE Score ranges for individual secondary schools are generated from students' PSLE results and school choice patterns at the previous year's S1 Posting Exercise.
- They reflect the PSLE Score of the first and last student who have been posted into each school under the AL system. Slight fluctuations in schools' Cut-Off Points (COPs) can happen from year to year.
- Schools' PSLE Score ranges from the 2021 S1 Posting will be released in the first half of 2022.

INDICATIVE ACHIEVEMENT LEVEL (AL) CUT-OFF POINT (COP) RANGES FOR DIFFERENT SCHOOL TYPES

Government & Government-aided Schools These schools are the mainstay of our education system, and offer high-quality education at standardised fees. These schools offer a range of electives, applied subjects and student development programmes.	Course	Indicative AL COP range for PSLE
	Express (Integrated Programme (IP))	7 – 9
	Express (O-level)	8 – 22
	N(A)	22 – 25
	N(T)	26 – 30

INDICATIVE ACHIEVEMENT LEVEL (AL) CUT-OFF POINT (COP) RANGES FOR DIFFERENT SCHOOL TYPES

Autonomous Schools These schools are Government or Government-aided schools that provide a wider range of programmes that seek to enhance students' learning experiences and develop their talents.	Course	Indicative AL COP range for PSLE
	Express (IP)	7 – 9
	Express (O-level)	8 – 16
	N(A)	22 – 25
	N(T)	26 – 29
Independent schools These schools have the autonomy to develop their curriculum and programmes to cater to their students' diverse learning needs.	Course	Indicative AL COP range for PSLE
	Express (IP)	6 – 8
	Express (O-level)	8 – 10

2022 PSLE Schedule (Tentative)

Dates	Examination Papers
11 & 12 August	PSLE Oral
16 September	PSLE Listening Comprehension
29 September	English Language Paper 1 & 2 Foundation English Language Paper 1 & 2
30 September	Mathematics Paper 1 & 2 Foundation Mathematics Paper 1 & 2
3 October	Mother Tongue 1 & 2 Foundation Mother Tongue & NTIL Paper 1 & 2
4 October	Science & Foundation Science
5 October	Higher Mother Tongue Paper 1 & 2



It's about... seeing possibilities, creating meaning and making a difference, together ☺



**Leaders of Character,
championing Service and Excellence**

Leaders of Character, championing Service and Excellence



Entering a Secondary School

Entering a Secondary School



PSLE/S1 Posting Process

- Based on a student's **PSLE score**
- **Most students enter secondary schools this way**



DSA-Sec

- Based on a diverse range of **talents and achievements in specific academic subjects or non-academic areas, beyond what the PSLE recognises**
- Allows students to **access school programmes to develop their talents**

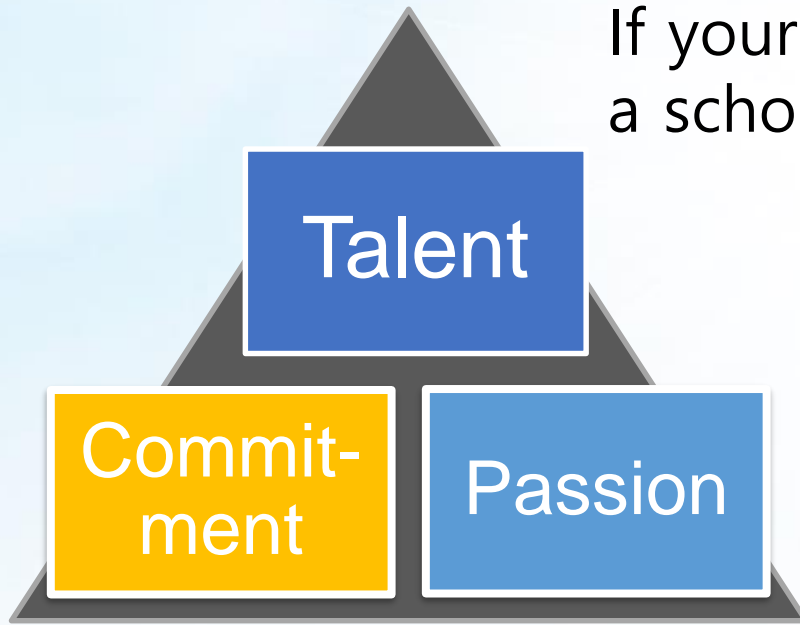


Leaders of Character, championing Service and Excellence



DSA

Is the DSA-Sec right for my child?



If your child has specific **talents** which a school offers the DSA-Sec

And is **passionate** about and **committed** to developing his/her strengths and interests

DSA-Sec can support his/her development in that talent area.



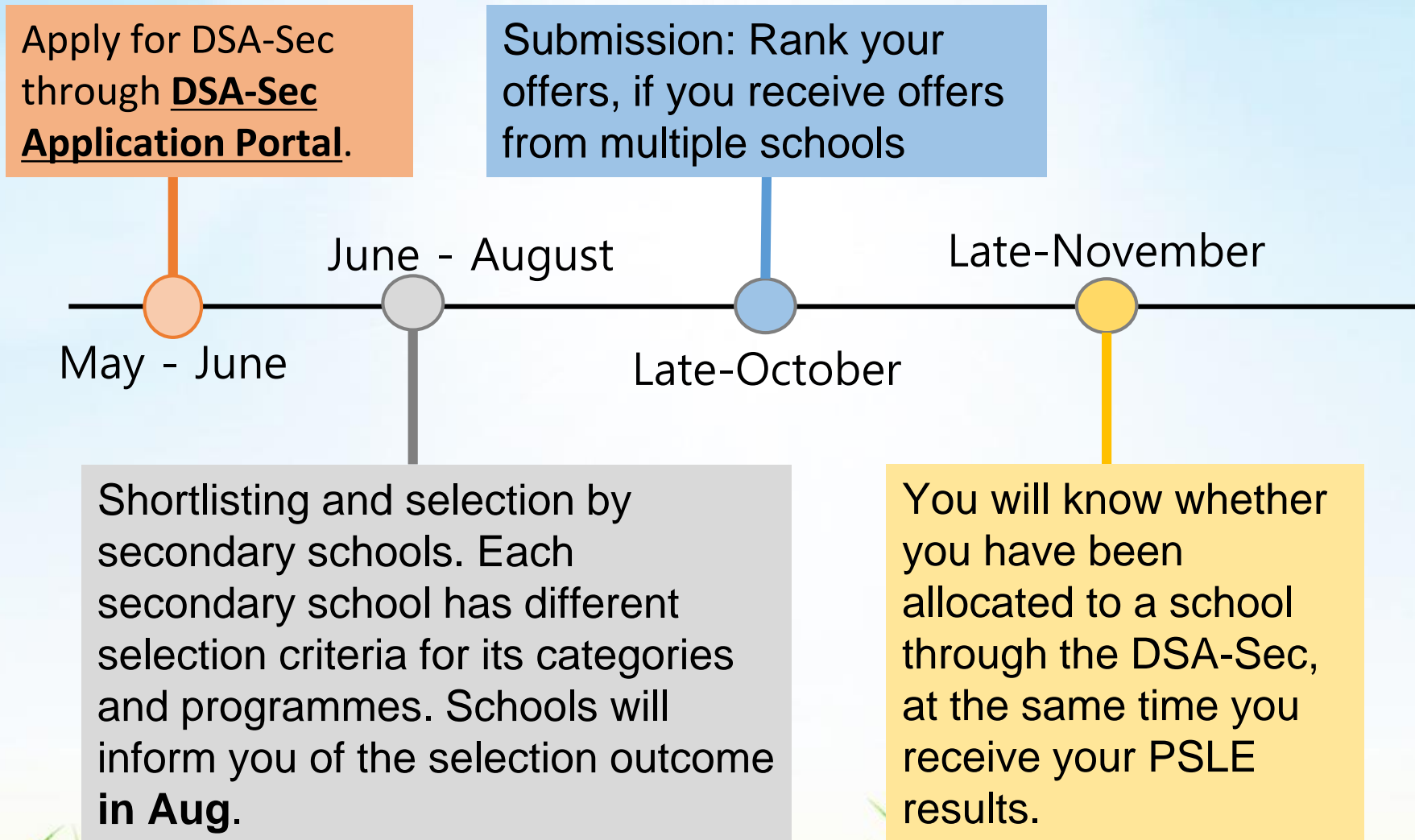
Which school should my child apply to?

Look for a school with **programmes that match your child's strengths and interests**

- Schools are looking out for students whose interests and talents they can develop further.
- Learn more about the secondary school's **pace of learning** and overall range of programmes



Timeline for 2022 DSA-Sec (Tentative)



Features of the DSA-Sec Portal

**Centralised
online
applications**

**No
application
fees**

**Application
using
Singpass**



Making choices in the DSA-Sec portal

Indicate up to three choices. For each choice, you will need to choose a secondary school and a talent area from that school.

Order of the choices does not matter during application

Of the three choices, up to two choices may be used to apply to the same school, for two different talent areas of that school.

Note. Students can apply separately to School of the Arts and Singapore Sports School, on top of the DSA-Sec choices made through the DSA-Sec Portal.



Examples of Possible Choice Combinations

EXAMPLE 1	Talent(s)	School(s)	Your child can apply to <u>up to three different schools</u> , with no restrictions on the talent areas.
	Choir	School A	
	Choir	School B	
	Choir	School C	
EXAMPLE 2	Talent(s)	School(s)	If your child chooses two areas in one school, he/she can apply to two different schools only ,
	Choir	School A	
	String Orchestra	School A	
	Choir	School B	
EXAMPLE 3 (Not allowed)	Talent(s)	School(s)	Your child cannot use all three choices on one school. He/she can leave the third choice blank or choose another school.
	Choir	School A	
	String Orchestra	School A	
	Mathematics	School A	



What are the possible DSA-Sec outcomes?

Confirmed Offer (CO)

- Your child has a place reserved in the school, as long as his/her PSLE results qualify him/her for a course the school offers (i.e. Express, Normal (Academic) or Normal (Technical))

Wait List (WL)

- Your child will be given a place in the school if other students with Confirmed Offers do not take up those offers, and if his/her PSLE results qualify him/her for a course the school offers. Allocation will be based on students' rank on the school's Wait List.

Unsuccessful

- Your child has not been given a place in the school. If your child still wishes to enter the schools he/she applied for, he/she can apply through the S1 Posting process using his/her PSLE results.



How are DSA-Sec places allocated?

Example: Confirmed Offer vs Wait List

Hani is given Confirmed Offer by Courage Secondary. Hani selected Courage Secondary as her 2nd choice.

Victor is offered a Wait List by Courage Secondary. Victor selected Courage Secondary as his 1st choice.

Who will be considered for a place in Courage Secondary first?

Hani will be considered for a DSA-Sec place in Courage Secondary before Victor, as she has a Confirmed Offer.



If my child has a DSA-Sec Confirmed Offer, does it mean that his/her PSLE results will not matter?

Your child's PSLE results will still be **used to determine the secondary school course he/she is eligible** for (i.e. Express, Normal (Academic), Normal (Technical))

Even if he/she has a Confirmed Offer, he/she **must qualify for a course offered by the school** to be admitted to the DSA-Sec school.

Example: Leo has a Confirmed Offer from Courage Secondary, which offers the Express Course only. However, Leo's PSLE results qualify him for the Normal (Academic) course. Hence, Leo will not be able to go to Courage Secondary through DSA-Sec. If he is not allocated a place in another DSA-Sec school whose CO/WL offer he had accepted at the School Preference stage, he will participate in the S1 Posting.



Where can I find more information on the 2022 DSA-Sec?

- Check the [MOE DSA-Sec website](#) for important dates and timelines, and for information on how DSA-Sec will be conducted.
- The updated 2022 DSA-Sec information will be published around April/May 2022.
- The MOE DSA-Sec website also contains information on DSA categories and secondary schools offering them.



Leaders of Character, championing Service and Excellence



S1 Posting Exercise

Timeline for S1 Posting Exercise (Tentative)

Oct 2022

- Distribute S1 Information Booklet
- Distribute Secondary School Education Booklet

Nov 2022

- PSLE Results Release
- S1 Sch Choice Submission Starting from release of PSLE results, via:
 - a) S1-IS (7 calendar days)
 - b) Primary School (5 working days)

Dec 2022

- Posting Results Release



S1 Posting Exercise

All PSLE students who are promoted to S1, are required to participate in S1 Posting, except for DSA successful students. Please see the table below on the types of PSLE students and their eligibilities.

Type	Students	Take part in S1 Posting?	Allowed to opt for Third Languages and/or Course Options?
1	Did not participate in DSA-Sec	✓	✓ (If eligible)
2	Unsuccessful in DSA-Sec		
3	Successful in DSA-Sec <u>with</u> eligibility	✗	✓
4	Successful in DSA-Sec <u>without</u> eligibility		✗



Choosing a Secondary School

DISCUSS WITH YOUR CHILD

- Consider your child's learning style, strengths and interests when making school choices in order to find a school that would help the child learn and thrive best.
- Discuss the options with the child, with the following considerations:
 - **Values:** What is the school's culture and ethos?
 - **Learning environment:** Is the school's learning environment right for the child?
 - **Distinctive programmes and CCAs:** Can the school support and develop the child's interests?
 - **Location:** Is it too far from home? How will the child get to school?



Choosing a Secondary School

RESOURCES

MOE SchoolFinder Tool



- MOE SchoolFinder tool - More information on secondary schools can be found here, on school websites and in the Secondary 1 information booklet given to students in Primary 6.
- Open Houses - Secondary schools also hold open houses where you and your child can learn more about the school's programmes, and speak with teachers and students.



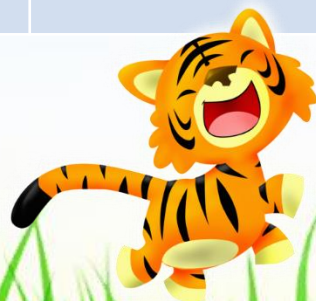
*Leaders of Character,
championing Service and Excellence*



P6 Learning Journeys and Programmes

P6 Level Programmes (Tentative)

Cognitive	Physical	Aesthetics	Social & Moral	Leadership
Design Thinking	P6 Interclass Games	Mixed Media Art	CyberWellness	Class Committee Leaders
Google Sites	Games	Drums	Motivational Series	Children's Market
Growth Mindset language in classroom	Concept Approach	Hip Hop Dance	Chinatown LJ	
Ecology Trip to Pasir Ris Beach		Dragon Kiln LJ	IHT to Civic District	



Form Teacher's Briefing

Class	Zoom Details
6R1	https://moe-singapore.zoom.us/j/84512971502 Meeting ID: 845 1297 1502 Passcode: p6mtp
6R2	https://moe-singapore.zoom.us/j/86877198421 Meeting ID: 868 7719 8421 Passcode: p6mtp
6R3	https://moe-singapore.zoom.us/j/81101209993 Meeting ID: 811 0120 9993 Passcode: p6mtp
6I	https://moe-singapore.zoom.us/j/89123961529 Meeting ID: 891 2396 1529 Passcode: p6mtp

* Refer to PG message sent on 17th January for the zoom details



Thank You



*Leaders of Character,
championing Service and Excellence*

Useful Links

- <https://www.moe.gov.sg/microsites/psle-fsbb/index.html>
- <https://www.moe.gov.sg/schoolfinder/?journey=Secondary%20school>
- <https://www.moe.gov.sg/secondary/dsa>

