

# P6 Meet-The-Parents

7 February 2025

*Never Back Down, Never Give Up*

Leaders of Character, Championing Service and Excellence



# Team of Sixers





# Programme Flow

- Introduction by Principal, Ms Jamie Lie
- PSLE Matters
- Full SBB
- S1 Posting Exercise
- Direct School Admission (DSA)
- Level Programmes
- Communications & SOP



# Curriculum Briefings

- Video presentation by the respective HODs/ Subject Representatives
- Slides on curriculum updates will be posted online (English, Maths, Science & MT)
- Should you have any queries, please email the respective academic Head of Department or Subject Teacher



# Curriculum Briefing Videos



**PARK VIEW**  
PRIMARY SCHOOL

ABOUT US ▾

CURRICULUM ▾

CO-CURRICULUM ▾

PARK VIEW EXPERIENCE ▾

**OUR STAKEHOLDERS** ▾

OUR STUDENTS ▾

HOME / OUR STAKEHOLDERS / FOR PARENTS / MTP 2025

## MTP 2025

Appreciation & Feedback

Alumni ▾

**For Parents** ▲



Financial Assistance  
Scheme

Primary 1

Primary 2 & 3

Primary 4 & 5





# Parent-Teacher Conference for P6s

- Based on feedback, meeting with teachers will be held tentatively in T2W1 – 28 March 2025
- More details will be shared closer to the date



# Shared Concerns

- Preparation for PSLE
- PSLE structure, timeline, schedule
- DSA Matters
- Details on assessments (Prelims & PSLE)
- Remedial / Supplementary Lesson during holidays
- Operational Matters



# Introduction by Principal, Ms Jamie Lie





**Our School Philosophy**

**Every Child Matters**

**Our Mission**

**To nurture future-ready students,  
anchored on values**

**Our Vision**

**Leaders of Character,  
championing Service and Excellence**

**Our Values**

**R<sup>3</sup>ICH**

**Our Belief at PVPS**

Leaders of Character, Championing Service and Excellence



**grit**  
**/grɪt/**

: mental toughness and courage  
: firmness of mind or spirit; unyielding  
courage in the face of hardship or danger



# **adaptability**

/əˌdaptəˈbɪlɪti/

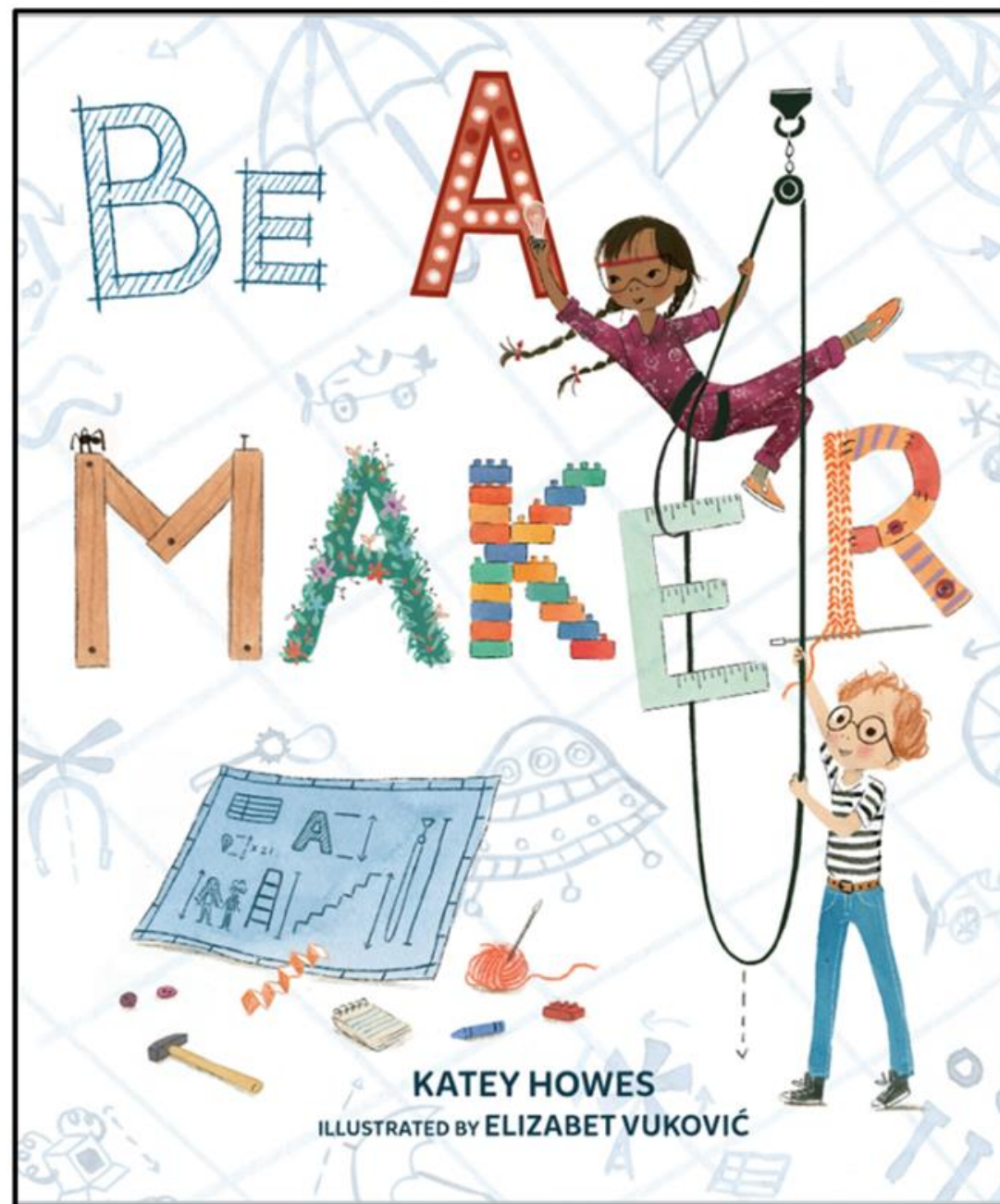
: the quality of being able to adjust to new conditions.



# **confidence**

**/'kɒnfɪd(ə)ns/**

**: the feeling or belief that one can have faith in or rely on someone or something**





***Be Creative.  
Everyone has unique talents  
and abilities.  
We can make different things,  
each with its own special  
value.***

**Each student is  
different.  
Let's help them  
discover their  
strengths and make  
the right choices.**

Sometimes you can only do  
a small, small thing for others.  
And that can make all the  
difference.



@oxherdboy

# Don't let 'No's stop you from trying and creating



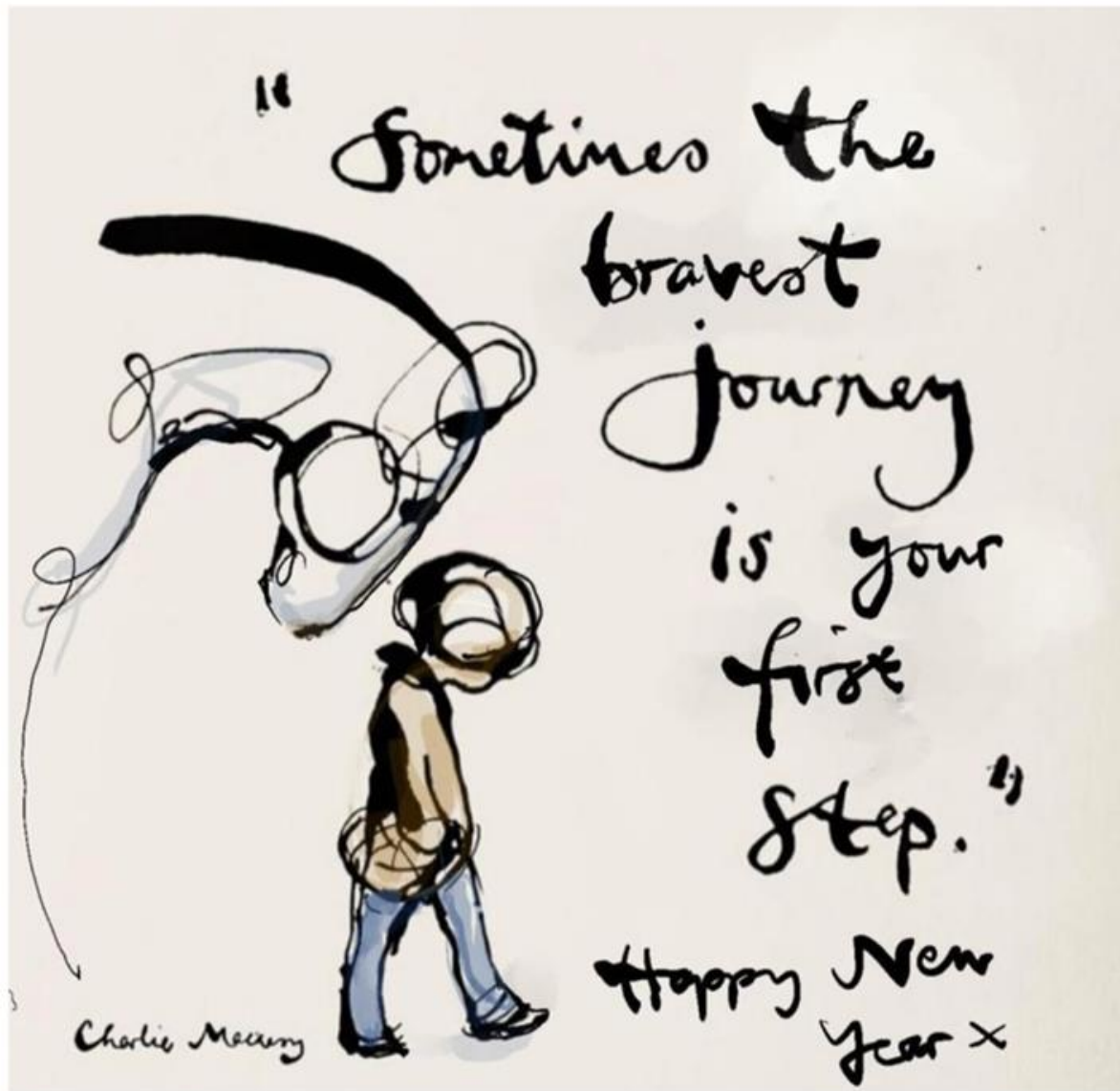
- Reframing
- Be brave
- The Power of "Yet"

A Thousand  
**NO's**



written by  
DJ CORCHIN

illustrated by  
DAN DOUGHERTY

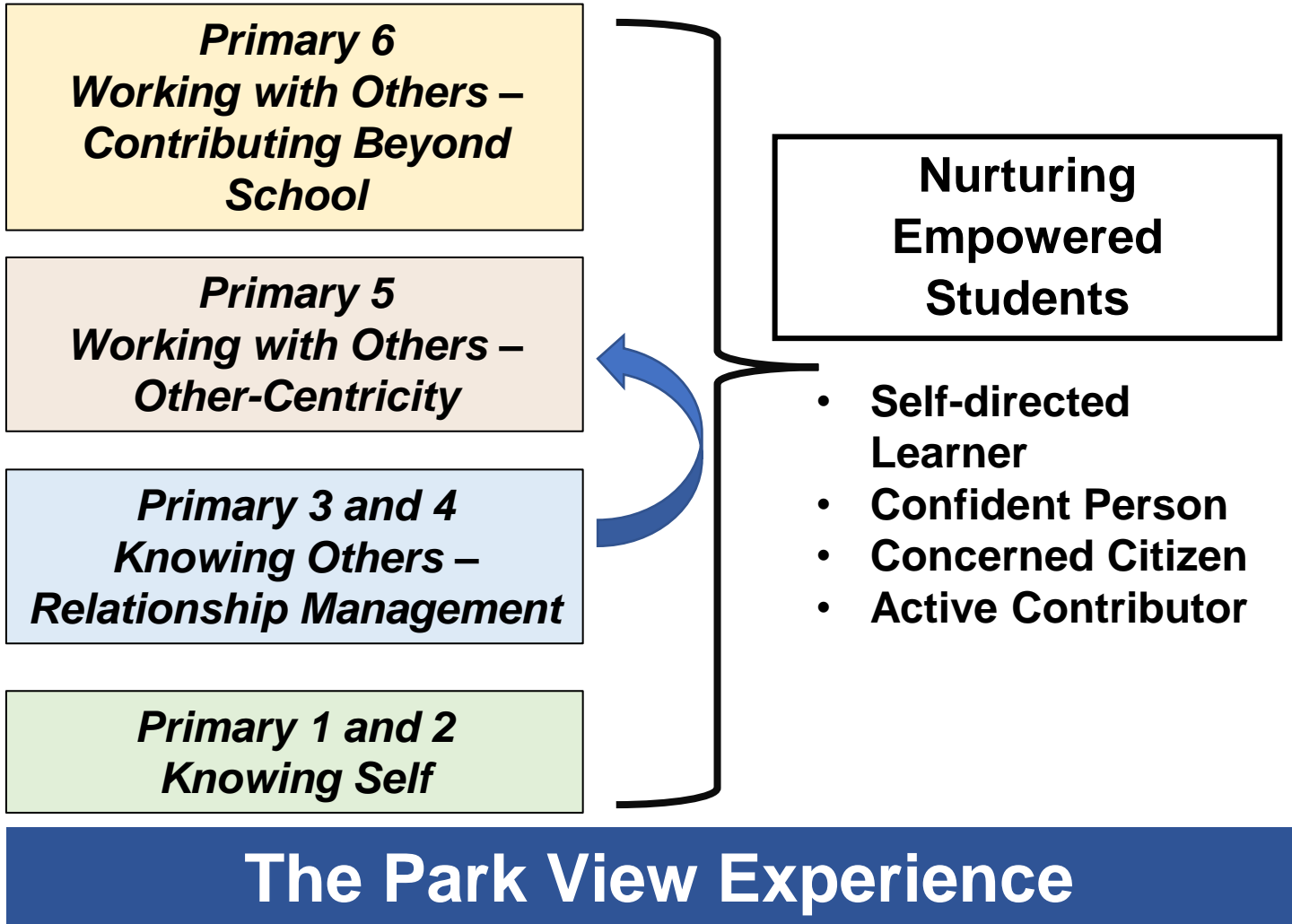


**What will you be proud of this year?**



# Vision: Leaders of Character, Championing Service & Excellence

## Mission: To Nurture Future-Ready Students, Anchored on Values



**PVPS Student Outcomes**

# Our Values: R<sup>3</sup>ICH



**Respect for All**

**Responsibility in Actions**

**Resilience in Adversity**

**Integrity Our Core**

**Care for Community**

**Harmony in Diversity**

# Holistic Support for Your Child in School



- P6 Study Skills Workshop
  - Learning styles
  - Growth Mindset
  - Stress management
- P6 Enrich Programme
- After school support for selected students
- Post PSLE Programme

## Working Together to Support your Child

*“Alone we can do so little,  
together we can do so much.”*

- Helen Keller, American Author





# PSLE Matters

# WHAT IS THE INTENT OF THE PSLE?



**A useful checkpoint at the end of primary school**

**A fair way to determine secondary school posting**



Over the years, we have been changing the education system to help our students discover and develop their strengths, interests, abilities and talents while moving away from an over-emphasis on academic results. Our PSLE Scoring system reduces the over-emphasis on academic results by:

**1**

**Reducing fine differentiation of students' examination results at a young age.**

**2**

**Recognising a student's level of achievement, regardless of how his/her peers have done.**

**3**

**Encouraging families to choose secondary schools holistically based on students' strengths, interests and learning needs.**

# Shared during P5 MTP



## FROM T-SCORE TO SCORING BANDS

a) Reduces fine differentiation of students' examination results at a young age

- Students with similar scores in each subject are grouped into wider scoring bands measured in 8 ALs.

b) Reflects a student's individual level of achievement

- Students' ALs for each subject reflect their level of achievement, rather than how they have performed relative to their peers.

AL	RAW MARK RANGE
1	≥ 90
2	85 – 89
3	80 – 84
4	75 – 79
5	65 – 74
6	45 – 64
7	20 – 44
8	< 20

ENGLISH LANGUAGE	AL 3
MATHEMATICS	AL 2
SCIENCE	AL 1
MOTHER TONGUE LANGUAGE	AL 2
PSLE SCORE : 8	

## GRADING OF FOUNDATION SUBJECT GRADES

- Foundation subject grades are graded in scoring bands from **AL A to C**.
- To derive a student's overall PSLE Score for S1 Posting, AL A to AL C for Foundation level subjects are **mapped to AL 6 to AL 8 of Standard level subjects respectively**.
- Similar to the PSLE T-score system, this mapping is based on the learning and assessment load of the subjects, and informs students of how ready they are for the curriculum in secondary school.

FOUNDATION LEVEL AL	FOUNDATION RAW MARK RANGE	EQUIVALENT STANDARD LEVEL AL
A	75 – 100	6
B	30 – 74	7
C	< 30	8

## Eligibility for Secondary School Higher Mother Tongue Language (HMTL)

- The eligibility criteria for taking HMTL is intended to ensure that students can cope with the higher academic load, and takes reference from the current criteria.

### ELIGIBILITY CRITERIA FOR SECONDARY SCHOOL HMTL

- (i) PSLE Score of **8 or better**
- OR
- (ii) PSLE Score of 9 to 14 inclusive; **and** attain
  - AL1 / AL2 in MTL **or**
  - Distinction / Merit in HMTL

- For students who do not meet the above criteria, secondary schools will continue to have the flexibility to offer HMTL to students, if they are assessed to have high ability and interest in MTL and are able to take HMTL without affecting their performance in other subjects.

# Shared during P5 MTP



## USE OF HIGHER CHINESE LANGUAGE (HCL) FOR ADMISSION INTO SPECIAL ASSISTANCE PLAN (SAP) SCHOOLS



Leaders of Character,  
championing Service and Excellence

## HCL POSTING ADVANTAGE FOR ENTRY TO SAP SCHOOLS WILL CONTINUE

Students who obtained a Distinction/Merit/Pass for HCL at the PSLE and an overall PSLE Score of 14 or better will receive a posting advantage when applying to SAP schools.

Students will be considered for admission to SAP schools in the following order:			
1st	7	NO HCL	Students with better PSLE Scores will be posted first, even if they did not take HCL.
2nd	8	DISTINCTION	
3rd	8	MERIT	Amongst students with the same PSLE Score, those with better HCL grades will be posted first.
4th	8	PASS	
5th	8	NO HCL	
6th	9	DISTINCTION	

- Students' HCL results are denoted as 'D' (Distinction), 'M' (Merit) or 'P' (Pass).
- Students who obtain (i) a Distinction / Merit / Pass in HCL and (ii) a PSLE Score of 14 or better are eligible for posting advantage to SAP schools.
- Students are ranked taking into account their performance in HCL.
- This posting advantage applies before the tie-breakers for S1 Posting.

Leaders of Character,  
championing Service and Excellence

32

## FULL SUBJECT-BASED BANDING (FULL SBB)

- MOE is expanding Subject-Based Banding to Full SBB in secondary schools.
- This is in line with the changes to PSLE Scoring to recognise each student's own level of achievement and encourage them to choose secondary schools that fit their strengths and interests.
- Full SBB aims to further nurture the joy of learning and develop multiple pathways to cater to the different student profiles. Through Full SBB, we want students to:



- have greater ownership of their education, and learn each subject at the level that best caters to their overall strengths, interests and learning needs, and
- have more opportunities to interact with friends of different strengths and interests.
- not be held back by negative self-concepts and labelling.
- have increased access to post-sec pathways, while having strong fundamentals in their subjects so that they are able to thrive in the pathway they choose.

Leaders of Character,  
championing Service and Excellence

## FULL SUBJECT-BASED BANDING (FULL SBB)

- The following are changes that students will experience from Full SBB:

- Removal of Express, N(A) and N(T) courses
- Mixed form classes
- Common Curriculum subjects
- Offering subjects at a more demanding level, including Humanities subjects
- Common National Examinations
- Post-secondary Admissions (*More information will be made available at a later date.*)



Leaders of Character,  
championing Service and Excellence

29



# Shared during P5 MTP

## WHAT REMAINS

- Same 4 subjects are tested, and scores are awarded to guide students' choices for the next stage of their education journey
- Curriculum is continually updated. This is not related to the PSLE scoring and S1 posting changes.

## WHAT CHANGES

- The T-score Aggregate will be replaced by the PSLE Score, to reduce the fine differentiation of our students at a young age based on exam scores.
- Students will be assessed based on their own achievement, instead of comparing them to their peers.

*\*The changes will not affect the curriculum and subjects tested at PSLE*



# RESOURCES

## TOP QUESTIONS ON THE NEW PSLE SCORING SYSTEM



### Part 1

<https://go.gov.sg/psle-explainer-1>



### Part 2

<https://go.gov.sg/psle-explainer-2>



# 2025 PRELIMS Schedule (Tentative)



<b>Dates</b>	<b>Examination Papers</b>
15 & 16 July	Prelim Oral
31 July	Prelim Listening Comprehension
18 August	English Language Paper 1 & 2 Foundation English Language Paper 1 & 2
19 August	Mathematics Paper 1 & 2 Foundation Mathematics Paper 1 & 2
20 August	Mother Tongue 1 & 2 Foundation Mother Tongue & NTIL Paper 1 & 2
21 August	Science & Foundation Science
22 August	Higher Mother Tongue Paper 1 & 2

# 2025 PSLE Schedule (Tentative)



<b>Dates</b>	<b>Examination Papers</b>
13 & 14 August	PSLE Oral
16 September	PSLE Listening Comprehension
25 September	English Language Paper 1 & 2 Foundation English Language Paper 1 & 2
26 September	Mathematics Paper 1 & 2 Foundation Mathematics Paper 1 & 2
29 September	Mother Tongue 1 & 2 Foundation Mother Tongue & NTIL Paper 1 & 2
30 September	Science & Foundation Science
1 October	Higher Mother Tongue Paper 1 & 2



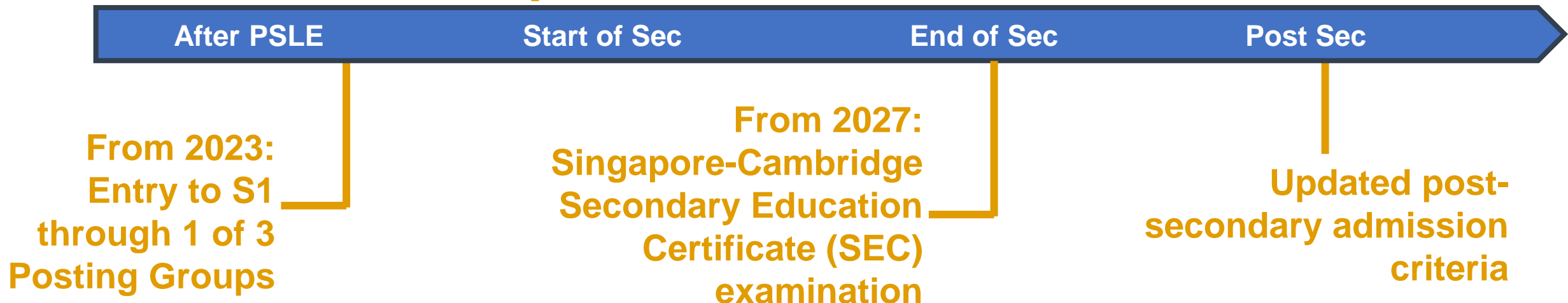
# Full Subject Based Banding

# FULL SUBJECT-BASED BANDING (FULL SBB)



## Secondary school experience under Full SBB

- **Mixed form classes** and **common curriculum subjects at Lower Secondary.**
- **Subjects to be offered at G1, G2 or G3**, mapped from the standards of the N(T), N(A) and Express subject levels respectively.
- **Greater flexibility** to customise students' learning by offering subjects at various subject levels.
- **Shift away from stream-based subject offerings.**



# FULL SBB: S1 POSTING



Three Posting Groups to ensure schools are accessible to diverse learners

Unlike the-academic streams of Express, N(A) and N(T), Posting Groups will only be used for the purposes of facilitating entry into secondary school and to guide the subject levels students offer at the start of S1.

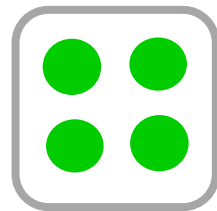
- Posting Groups assigned based on PSLE Scores, mapped from existing PSLE Score ranges for Express, N(A) and N(T) streams.
- PSLE Scores provide a good gauge of the subject levels that students can offer at the beginning of S1.

PSLE Score	Posting Group	Subject level for most subjects
4 – 20	3	G3
21 and 22	2 or 3	G2 or G3
23 and 24	2	G2
25	1 or 2	G1 or G2
26 – 30 <i>(with AL 7 in EL and MA)</i>	1	G1

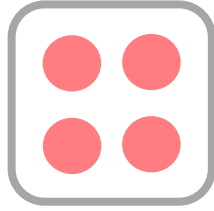


# FULL SBB: MIXED FORM CLASSES IN LOWER SECONDARY

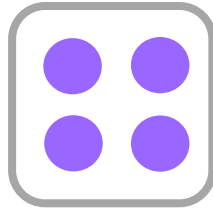
## Class Allocation prior to Full SBB



Students  
in Exp  
stream



Students  
in N(A)  
stream



Students  
in N(T)  
stream

## With Full SBB: Mixed form classes



Students posted through **PG3**



Students posted through **PG2**



Students posted through **PG1**

- Under Full SBB, students will be placed in mixed form classes in Lower Secondary to ensure a **mix of learner profiles**.
  - Provides students with **more opportunities** to interact with other students of different strengths and interests.
  - Enables students to **build meaningful friendships and learn to value different perspectives**.



# FULL SBB: COMMON CURRICULUM



Common Curriculum Subjects  
taken in mixed form classes  
(-1/3 curriculum time)

## Examinable Subjects:

- Art
- Design & Technology (D&T)
- Food & Consumer Education (FCE)

## Non-examinable Subjects:

- Character & Citizenship Education (CCE)
- Music
- Physical Education (PE)

- The six common curriculum subjects would each have a single syllabus for all students at Lower Secondary levels.
  - These subjects will be taught and assessed at a common level that is accessible to all students.
  - Teachers will adopt a range of approaches to cater to the different learning needs of their students.
- For other subjects, students attend classes with others taking the subject at the same subject level.

# OFFERING SUBJECTS AT A MORE DEMANDING LEVEL AT THE START OF SEC 1



- Students posted to schools through PG1 and PG2 can offer **English Language, Mother Tongue Languages, Mathematics and Science** at a more demanding level based on their PSLE AL for each subject.

FOR STUDENTS POSTED TO SCHOOLS THROUGH PG1 AND PG2			
SUBJECT	PSLE SUBJECT LEVEL	PSLE AL FOR SPECIFIC SUBJECT	OPTION TO TAKE THE S1 SUBJECT AT :
<ul style="list-style-type: none"> <li>• English Language</li> <li>• Mother Tongue Language</li> <li>• Mathematics</li> <li>• Science</li> </ul>	Standard	AL 5 or better	G3 or G2
		AL 6	G2
	Foundation	AL A	G2

# OFFERING SUBJECTS AT A LESS DEMANDING LEVEL AT THE START OF S1



- For students who offered **English Language, Mathematics and/or Science** at Foundation level at PSLE, but are otherwise eligible to take most of their subjects at G3 when entering secondary school, they may choose to take these subjects at a less demanding level (LDL; i.e., G2), in consultation with their secondary schools.
- Students have the option to offer **Mother Tongue Languages (MTL)** at LDL based on their PSLE Achievement Level (AL) for the subject:

POSTING GROUP (PG)	PSLE AL FOR MTL <sup>^</sup>	OPTION TO OFFER MTL AT A LESS DEMANDING LEVEL
PG3	AL 6	G2
	AL 7-8	G1 or G2
PG2	AL 7-8	G1

<sup>^</sup> Foundation level AL A to AL C will be mapped to AL 6 to AL 8 of Standard level subjects respectively.

- Students who are eligible to offer MTL at LDL can still choose to offer MTL at-level if they prefer.

# Resources



<https://go.gov.sg/ansot-fullsbbsummary>

**Title: A New School of Thought: Full SBB | What does it mean for me?**



<https://go.gov.sg/ansot-mixedformclasses>

**Title: A New School of Thought: Full SBB | Mixed form classes and common curriculum lessons**





# S1 Posting



# HOW DOES THE S1 POSTING WORK?

- Your child has **six choices** in selecting their secondary schools.
- Your child will be posted to a secondary school based on **academic merit**, **i.e., PSLE Score**, and their **choice order of schools**.
- If two or more students with the same PSLE Score vie for the last remaining place(s) in a school, the following tie-breakers are used in the following order:

## 1. CITIZENSHIP

## 2. CHOICE ORDER OF SCHOOLS

## 3. COMPUTERISED BALLOTING

- The tie-breaker based on school choice order recognises the different considerations that families have in making school choices.



# Tie-breakers

## in the new S1 Posting System

Tie-breakers are used only if there are two or more students with the same PSLE Score vying for the last available place(s) in a school.


Here's a simplified example.



5 students are vying for the last places in the schools of their choice.


**Jane**  
Singapore Citizen  
16 pts

SCHOOL CHOICES:  
1) Sch A  
2) Sch ...  
3) Sch ...  
4) Sch ...




**Bryan**  
Singapore Citizen  
20 pts

SCHOOL CHOICES:  
1) Sch B  
2) Sch ...  
3) Sch ...  
4) Sch ...




**Mary**  
Singapore Citizen  
20 pts

SCHOOL CHOICES:  
1) Sch A  
2) Sch B  
3) Sch C  
4) Sch ...




**Alan**  
Permanent Resident  
20 pts

SCHOOL CHOICES:  
1) Sch A  
2) Sch B  
3) Sch D  
4) Sch ...




**Rina**  
Permanent Resident  
20 pts

SCHOOL CHOICES:  
1) Sch A  
2) Sch B  
3) Sch D  
4) Sch E



➤ Students with better scores will be posted first

Jane has a better PSLE score. She will be posted first, to **School A**.





Bryan, Mary, Alan and Rina have the same score.

As Jane has taken the last available place in School A, Bryan, Mary, Alan and Rina will vie for the last available place in their next choice, **School B**.

➤ Tie-breaker #1: Citizenship


Bryan and Mary are Singapore Citizens. They will have priority to enter **School B**.


Alan and Rina will be tie-broken out as they are Permanent Residents. They will be considered for their next choice, **School D**.

➤ Tie-breaker #2: Choice order of schools

Because Bryan ranked School B higher than Mary, he will be posted to **School B**.




Since Bryan has taken the last place in School B, Mary will be posted to **School C**.




Alan and Rina have both ranked School D as their third choice. They will go through computerised balloting to vie for the last remaining place in **School D**.

➤ Tie-breaker #3: Computerised balloting

Through computerised balloting, Alan is posted to **School D**.



Since Alan has taken the last place in School D, Rina will be posted to her fourth choice, **School E**.






# PSLE SCORE RANGES FOR ALL SECONDARY SCHOOLS





# PSLE SCORE RANGES FOR ALL SECONDARY SCHOOLS

- Use the PSLE Score ranges as a reference alongside other important factors, such as the school's distinctive programmes, Co-Curricular Activities (CCA), culture, ethos, and proximity to home when shortlisting school choices that would best fit a student's educational needs.
- The PSLE Score ranges for individual secondary schools will be available for your reference on <https://moe.gov.sg/schoolfinder> and <https://go.gov.sg/exploreschools>. They reflect the PSLE scores of the students posted into these schools at the previous year's S1 Posting Exercise.
- A school's PSLE Score range (including Cut-Off-Point) for a particular year is not pre-determined before the posting, and vary from year to year, depending on the cohort's PSLE results and their school choices in that year's S1 Posting Exercise.

SchoolFinder Tool	MySkillsFuture Student Portal (Primary)
  <a href="https://www.moe.gov.sg/schoolfinder">https://www.moe.gov.sg/schoolfinder</a>	 <a href="https://go.gov.sg/exploreschools">https://go.gov.sg/exploreschools</a>

# HOW DO WE INTERPRET THE PSLE SCORE RANGES?

The PSLE Score range refers to the PSLE Score of the first and last student admitted to a particular school in the previous year via the S1 Posting Exercise. This shows the range of student profiles who enter each school.

## Example

XX Secondary School

PSLE Score range of 20XX (previous year's S1 Posting Exercise)

Posting Group 3	15 – 20
Posting Group 2	21 – 24
Posting Group 1	25 – 28

PSLE Score of the first student posted into the school in the respective PG.

PSLE Score of the last student posted into the school in the respective PGs [i.e., the school's **Cut-Off Point (COP)**].

*Note: Posting Groups will be assigned based on PSLE Scores, mapped from existing PSLE Score ranges for Express, N(A) and N(T) streams.*

# EXAMPLE OF A SAP SCHOOL'S PSLE SCORE RANGE

While students need not take HCL to enter SAP schools, students who pass HCL receive a posting advantage for admission. To reflect this, the PSLE Score ranges of SAP schools include the HCL grades of the first and last student admitted in the previous year via S1 Posting.

## Example

XX Secondary School

PSLE Score range of 20XX (previous year's S1 Posting Exercise)

Posting Group 3

5 (D) - 12 (P)

Posting Group 2

Posting Group 1

PSLE Score and HCL grade of the first student posted into the school through PG3.

PSLE Score and HCL grade of the last student posted into the school through PG3 [i.e. the school's Cut-Off Point (COP)].



# Entering a Secondary School

# Entering a Secondary School



## PSLE/S1 Posting Process

- Based on a student's **PSLE score**
- **Most students enter secondary schools this way**



## DSA-Sec

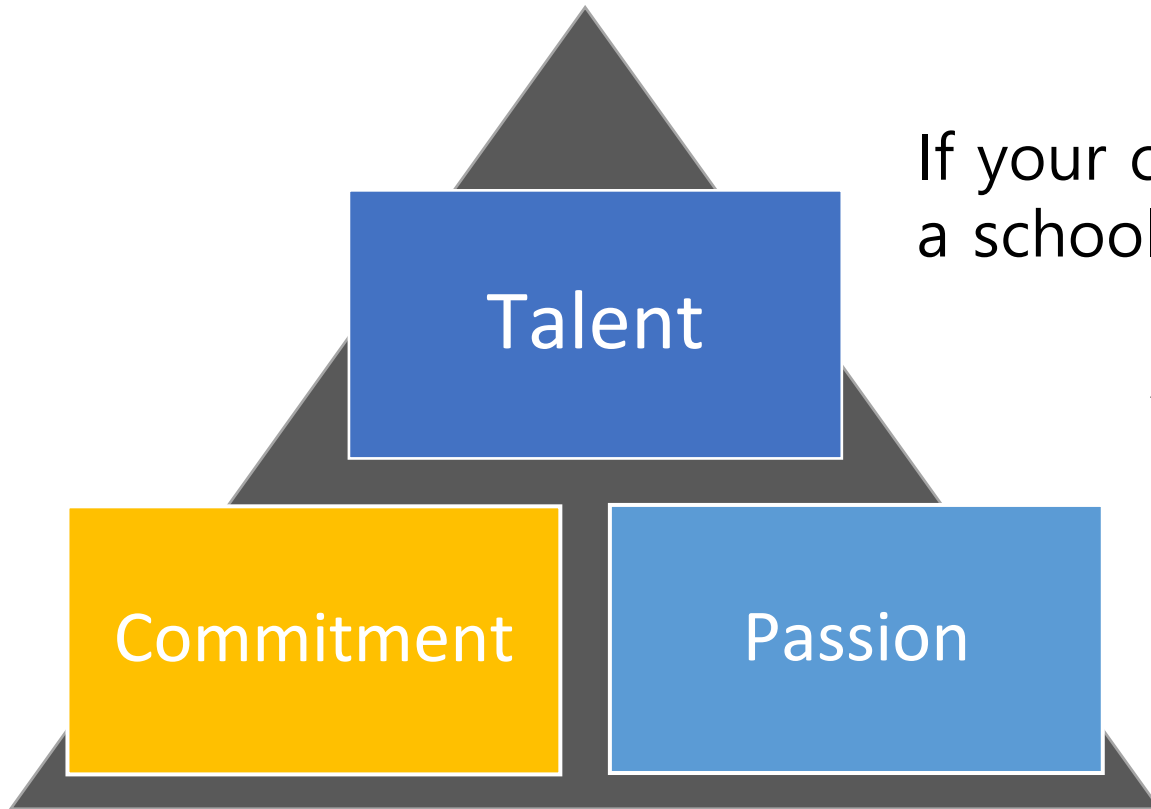
- Based on a diverse range of **talents and achievements in specific academic subjects or non-academic areas, beyond what the PSLE recognises**
- Allows students to **access school programmes to develop their talents**



# Direct School Admission (DSA)



# Is the DSA-Sec right for my child?



If your child has specific **talents** which a school offers the DSA-Sec

And is **passionate** about and **committed** to developing his/her strengths and interests

DSA-Sec can support his/her development in that talent area.

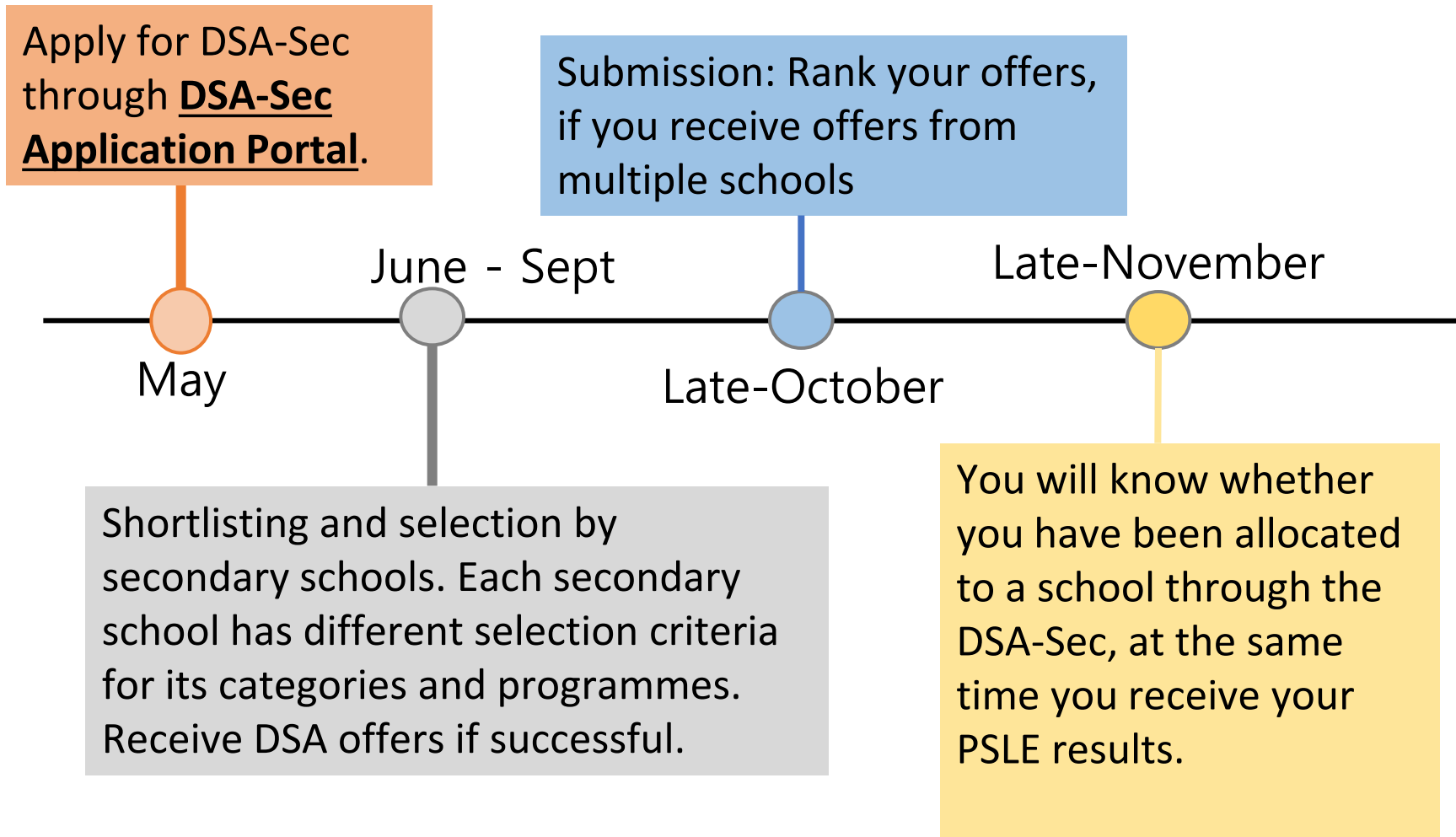


# Which school should my child apply to?

- Look for a school with **programmes that match your child's strengths and interests**
- Schools are looking out for students whose interests and talents they can develop further
- Learn more about the secondary school's **pace of learning** and overall range of programmes

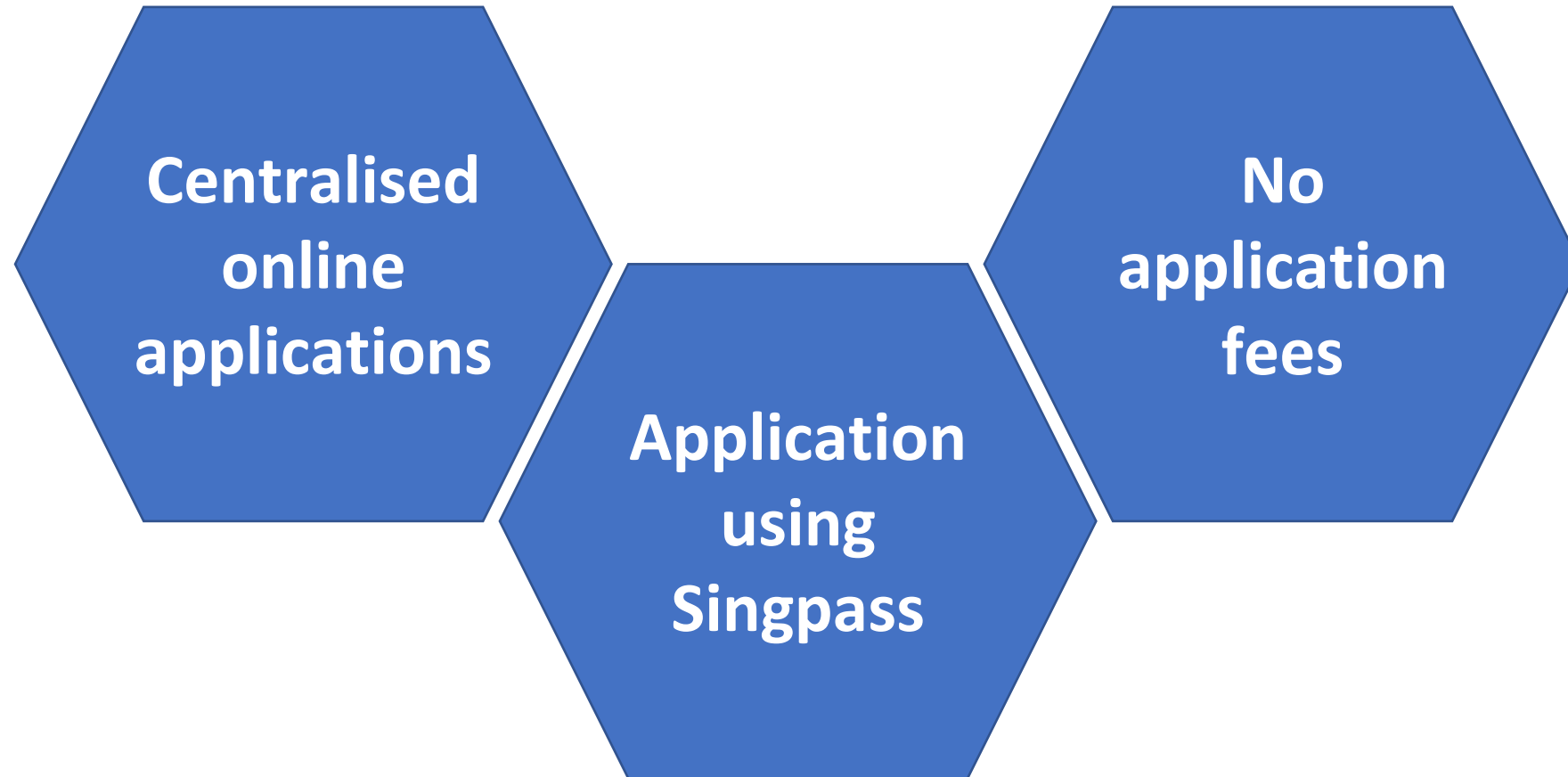


# Timeline for 2025 DSA-Sec (Tentative)





# Features of the DSA-Sec Portal





# Making Choices in the DSA-Sec Portal

Indicate up to three choices. For each choice, you will need to choose a secondary school and a talent area from that school.

Order of the choices does not matter during application

Of the three choices, up to two choices may be used to apply to the same school, for two different talent areas of that school.

Note. Students can apply separately to School of the Arts and Singapore Sports School, on top of the DSA-Sec choices made through the DSA-Sec Portal.

# Examples of Possible Choice Combinations



EXAMPLE 1	Talent(s)	School(s)	Your child can apply to <u>up to three different schools</u> , with no restrictions on the talent areas.
	Choir	School A	
	Choir	School B	
	Choir	School C	
EXAMPLE 2	Talent(s)	School(s)	If your child chooses two areas in one school, he/she can apply to <b>two different schools only</b> .
	Choir	School A	
	String Orchestra	School A	
	Choir	School B	
EXAMPLE 3 (Not allowed)	Talent(s)	School(s)	Your child cannot use all three choices on one school. He/she can leave the third choice blank or choose another school.
	Choir	School A	
	String Orchestra	School A	
	<del>Mathematics</del>	<del>School A</del>	

# What are the possible DSA-Sec outcomes?



## Confirmed Offer (CO)

- Your child has a place reserved in the school, as long as his/her PSLE results qualify him/her for a course the school offers.

## Wait List (WL)

- Your child will be given a place in the school if other students with Confirmed Offers do not take up those offers, and if his/her PSLE results qualify him/her for a course the school offers. Allocation will be based on students' rank on the school's Wait List.

## Unsuccessful

- Your child has not been given a place in the school. If your child still wishes to enter the schools he/she applied for, he/she can apply through the S1 Posting process using his/her PSLE results.

# How are DSA-Sec places allocated?



## Example: Confirmed Offer vs Wait List



Hani is given Confirmed Offer by Courage Secondary. Hani selected Courage Secondary as her 2nd choice.



Victor is offered a Wait List by Courage Secondary. Victor selected Courage Secondary as his 1st choice



**Who will be considered for a place in Courage Secondary first?**

Hani will be considered for a DSA-Sec place in Courage Secondary before Victor, as she has a Confirmed Offer.



If my child has a DSA-Sec Confirmed Offer, does it mean that his/her PSLE results will not matter?

Your child's PSLE score still matters.

Students offered placement in a DSA-Sec school still need a PSLE score that qualifies them for the course offered by the school.



# Where can I find more information on the 2025 DSA-Sec?

- Check the [MOE DSA-Sec website](#) for important dates and timelines, and for information on how DSA-Sec will be conducted.
- The updated 2025 DSA-Sec information will be published around April/May 2025.
- The MOE DSA-Sec website also contains information on DSA categories and secondary schools offering them.





# S1 Posting Exercise

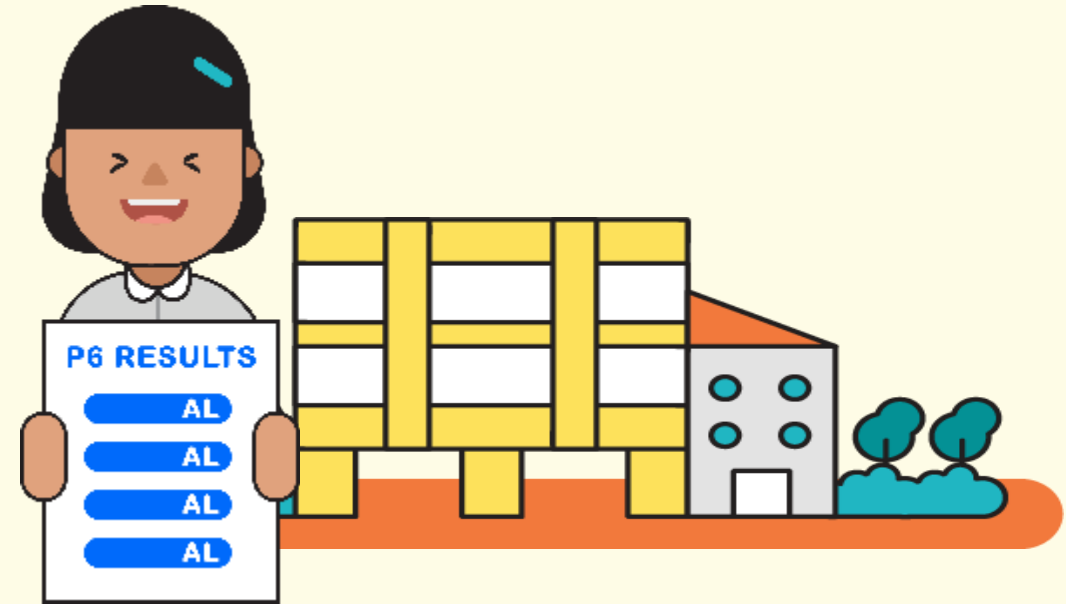
# S1 Posting Exercise



All PSLE students who are promoted to S1, are required to participate in S1 Posting, except for DSA successful students. Please see the table below on the types of PSLE students and their eligibilities.

Type	Students	Take part in S1 Posting?	Allowed to opt for Third Languages
1	Did not participate in DSA-Sec	✓	✓ (If eligible)
2	Unsuccessful in DSA-Sec		
3	Successful in DSA-Sec <u>with</u> eligibility	✗	✓
4	Successful in DSA-Sec <u>without</u> eligibility		✗

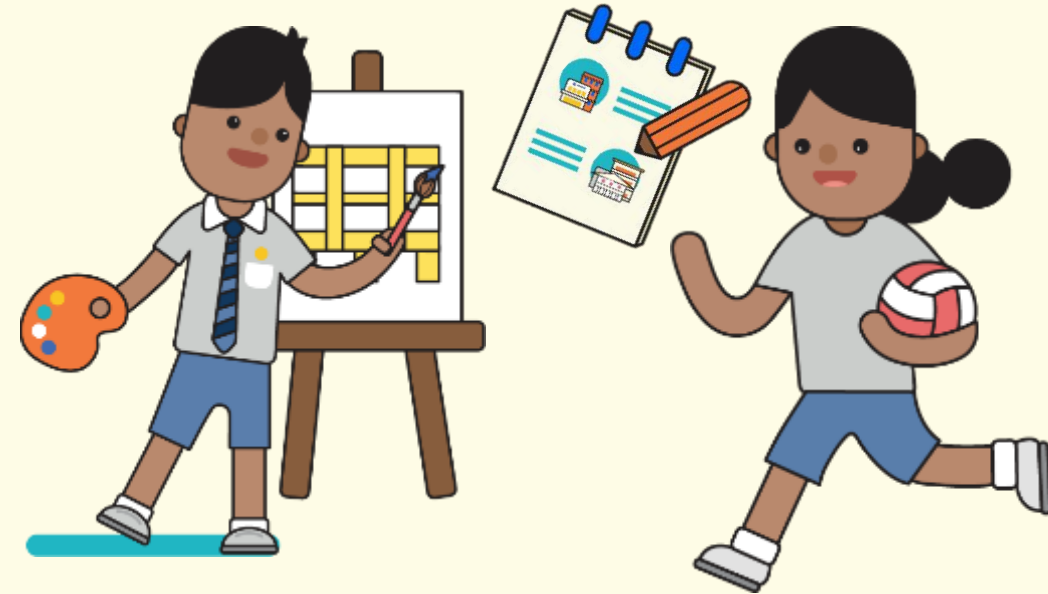
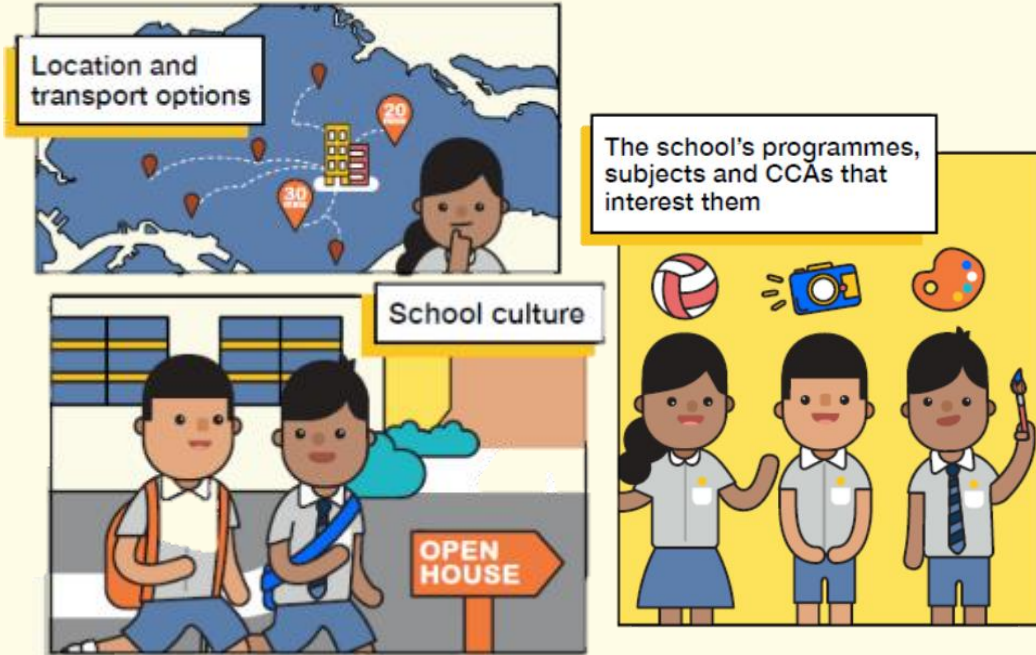
# PREPARING FOR THE S1 POSTING EXERCISE



Use all 6 options with a range of Cut-off Points as this will increase your child's chances of being posted to a school of their choice.

Take reference from schools' PSLE Score ranges, which serve as a guide for you and your child to shortlist school choices. Consider at least 2-3 schools where your child's PSLE Score is better than the school's Cut-off Point.

# PREPARING FOR THE S1 POSTING EXERCISE



Shortlist schools that offer programmes that cater to your child's strengths, interests, abilities, talents and learning needs, as well as provide suitable learning environments.

Rank your child's preferred school higher in the choice order of schools. This will increase your child's chances of being posted to that school, if they need to undergo tie-breaking.

# TIPS FOR PARENTS



**Be open and flexible when discussing your child's preferences, needs and choices.**

**Manage your own expectations and do not project these expectations onto your child.**



**Have regular conversations with your child to understand more about his/her strengths, interests, abilities, talents and aspirations.**

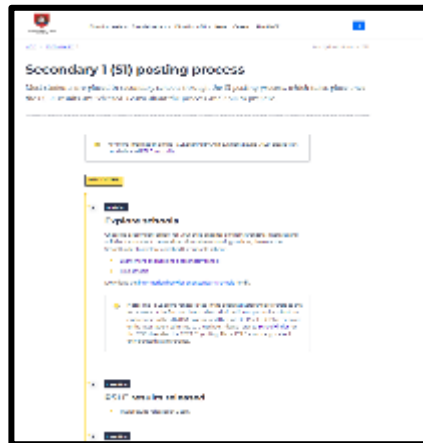
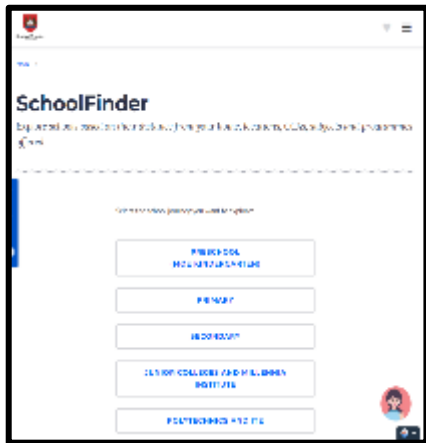
**Affirm your child and offer support when he/she shares his/her plans with you.**

# PREPARING FOR THE S1 POSTING EXERCISE



**SCHOOL  
FINDER**

*My*SKILLS*future*



- Release of **S1 Posting** results 

- Release of **PSLE** results
- Online Submission of **S1 School Choices and Options** 

**OCTOBER**

**NOVEMBER**

**DECEMBER**



# P6 Level Programmes

# P6 Level Programmes (Tentative)



Cognitive	Physical	Aesthetics	Social & Moral	Leadership
Design Thinking	P6 Interclass Games (TBC)	Art Modular	CyberWellness	Class Committee Leaders
Study Skills Workshop	Games Concept Approach	POP Music Band	LJ to Chinatown ✓	Children's Market
Growth Mindset language in classroom		Hip Hop Dance	LJ to ACM	
Visit to Bird Paradise		Dragon Kiln LJ	IHT to Civic District	



# P6 Enrich Programme



Consists of the following segments:

Additional Curriculum Support	Talks / Workshops	Admin-related Briefings
<ul style="list-style-type: none"><li>● <b><u>Sem 1:</u></b> Remedial for selected students</li><li>● <b><u>Sem 2:</u></b><ul style="list-style-type: none"><li>○ After school</li><li>○ During CCA slot on Fridays (0730-0900)</li><li>○ Lessons during June holidays (25th to 27th June tentatively)</li><li>○ September holidays (11th and 12th tentatively)</li></ul></li></ul>	<ul style="list-style-type: none"><li>● Study Skills</li><li>● Stress Management</li></ul>	<ul style="list-style-type: none"><li>● PSLE Instructions to Candidates Briefing</li><li>● PSLE LC, Oral and written papers' briefing</li><li>● S1 Posting briefing</li></ul>



# COMMUNICATIONS AND SOPs



# Parents Handbook 2025



**PARK VIEW**  
PRIMARY SCHOOL

ABOUT US ▾

CURRICULUM ▾

CO-CURRICULUM ▾

PARK VIEW EXPERIENCE ▾

OUR STAKEHOLDERS ▾

OUR STUDENTS ▾

HOME / OUR STAKEHOLDERS / FOR PARENTS / PARENT HANDBOOK

## Parent Handbook

Appreciation & Feedback

Alumni ▾

 Parents ▴

 [Parent Handbook 2025](#)





# Absenteeism

- Students are to be in school throughout term time.
- If students must be away from school due to
  - i. medical reasons** – Submit a **medical certificate** (MC) to their FT upon their return to school.
    - no make-up lessons or assessment will be conducted
  - ii. compassionate reasons** (e.g. serious illness of family member)
    - no make-up lessons will be conducted;
    - no worksheets will be given in advance.



# Additional Support

- Monitor usage of gadgets
- Monitor usage of time spent online/on games
- Check-in regularly with your child
- Maintain close communication with teachers
- Balance time for academics & leisure



# MOH Guidelines for Screen Time



## 7 to 12 years old



- Screen time: **Under 2 hours daily**, except for schoolwork
- Avoid giving children mobile devices with unrestricted internet and app access
- Avoid giving children access to social media

Infographic: Clara Ho

Source: Ministry of Health, Jan 21, 2025



# Thank you for your support😊



Leaders of Character, Championing Service and Excellence